

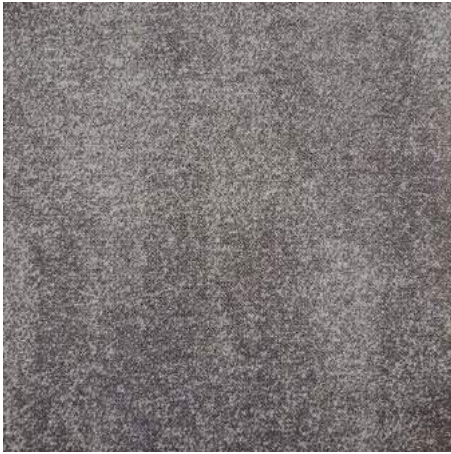


runtu

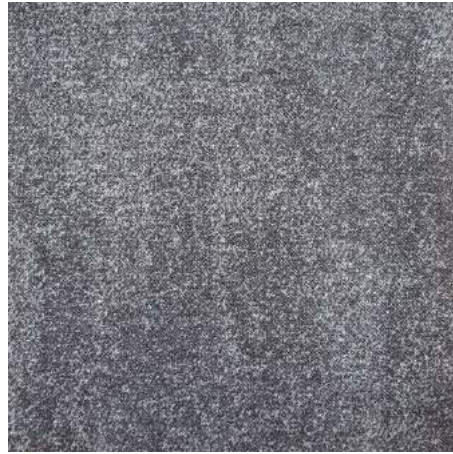
NATURE SHADOWS

We love nature - the texture and design this range portrays is that of natural expression bringing an atmosphere of purity and nature to your floor. We looked at scenes and environments created by shadows on colourways nature creates to bring this beautiful and functional colour palette together.

Heavy Contract
Designer Carpet Tile



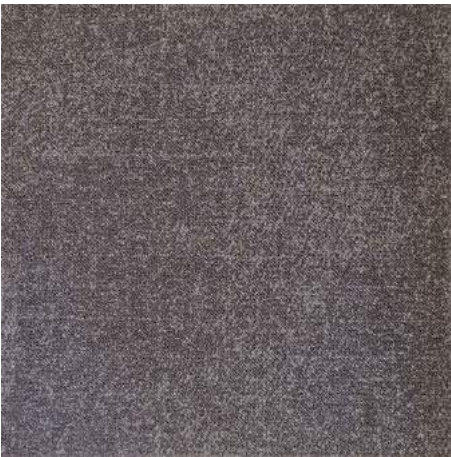
NS304



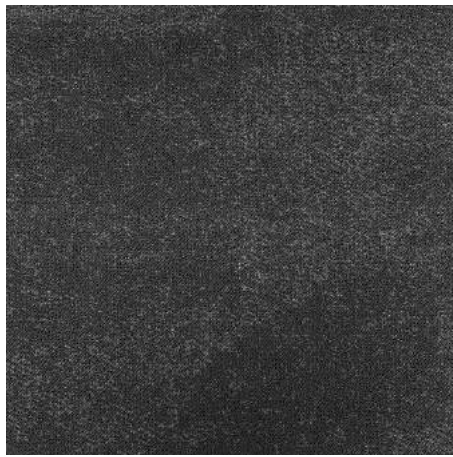
NS309



NS310



NS307



NS308



NS305



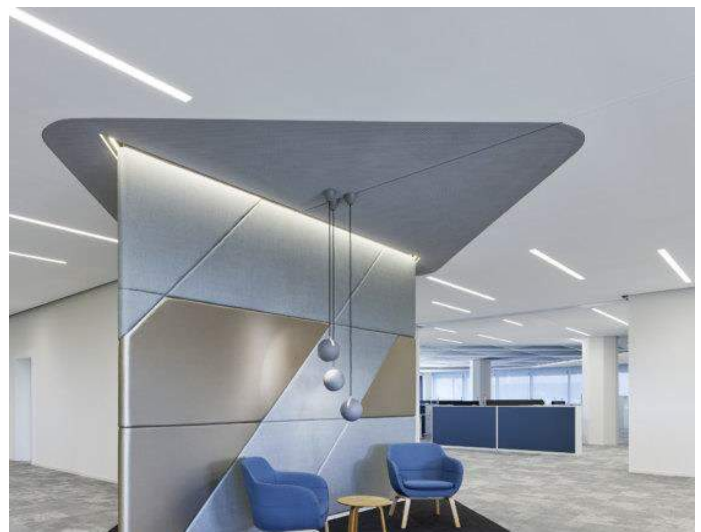
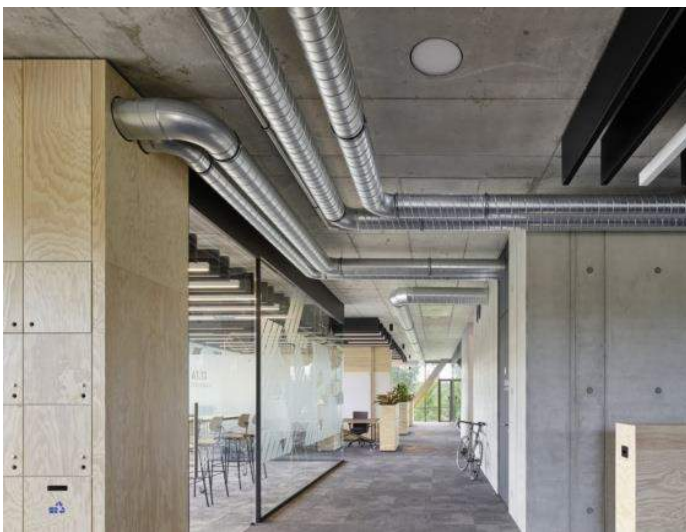
NS306



NS302



NS303



INSTALL INSPIRATION



NATURE SHADOWS

While we endeavour to make the process of specifying contemporary and elegant flooring transparent and simple, our focus still finishes with the product. We articulate our offering by giving you **style to work and live on**.

- **Heavy Wear – Nature Shadows** has a 10year commercial wear guarantee and is 520gr/m² which is designed to give excellent functionality in heavy wear areas.
- **Design & Apperance** – With a colour palette of 9 modern shades in a striking design this gives you great design flexibility when creating your floor space.

TECHNICAL SPECIFICATION

Product definition		: Tufted loop pile
Pile fibre		: 100% polyamide SDN
Pile weight	ISO 8543	: 520 gr/m ² ± 5%
Total thickness	ISO 1765	: 7.2 mm ± 7,5%
Total weight	ISO 8543	: 4200 gr/m ² ± 7,5%
Tile size		: 50 x 50 cm (± 19.7" x 19.7")
Tiles per box		: 20

PERFORMANCE

Use classification		: Class 33
Castor chair test	EN 985	: A, continues use
Thermal isolation	ISO 8302	: 0.09 m ² K/W
Dimensional stability	ISO 2551	: Pass

ELECTROSTATIC PROPERTIES

Walk on test	ISO 6356	: -0.1 kV
Static loading		: Anti-static

FLAME PROPERTIES

Reaction to fire	EN ISO 11925-2	
	EN ISO 9239-1	: B _{fl} – s1
Hot metal nut test	BS 4790	: Low Radius

COLOUR FASTNESS PROPERTIES

Light	ISO 105 B02	: > 5.0
Rubbing, dry	ISO 105 X12	: 4.5
Rubbing, wet	ISO 105 X12	: 5.0
Shampoo	BS 1006	: 4.5
Water	ISO 105 E01	: 5.0

GENERAL

Recommended maintenance: Best results are obtained when cleaned with a dry shampoo method.

Pile direction: Directional arrows are printed on the back of each tile.
Best results are obtained when laid brick-bond or straight-lay.

Laying instructions: Tiles require no underlay, nailing, gluing or sewing and may be laid loose on a flat, dry, non-slippery floor. When tiles are laid on parquet, vinyl or in open areas larger than 30 m² it is advisable to use double sided adhesive tape on every 8th row or a tackifier.

Please email team@ruutu.co.uk for further product information and sampling.



